

GF

60x120 cm / 23,6"x47,3"
Rect 59,1x119,1 cm / 23,3"x46,9"
45x90 cm / 17,7"x35,5"
32x62,5 cm / 12,6"x24,6"

MARMETTA
urbanessence

PIEDRA | PORCELÁNICO ESMALTADO
STONE | GLAZED PORCELAIN TILES
PIERRE | GRES CERAME EMAILLÉ
STEIN | GLASIERTES FEINSTEINZEUG
КАМЕНЬ | КЕРАМОГРАНИТ ГЛАЗУРОВАННЫЙ



Rect. Marmetta Cream 59,1x119,1 / 23,3"x46,9" · Marmetta Crear 32x62,5 / 12,6"x24,6" · Deco Marmetta Cream 32x62,5 / 12,6"x24,6" · Listelo Marmetta Cream 3,2x32 / 1,3"x12,6"

PIEDRA | PORCELÁNICO ESMALTADO
STONE | GLAZED PORCELAIN TILES
PIERRE | GRÉS CERAME EMAILLÉ
STEIN | GLASIERTES FEINSTEINZEUG
КАМЕНЬ | КЕРАМОГРАНИТ ГЛАЗУРОВАННЫЙ

60x120 cm / 23,6"x47,3"
Rect 59,1x119,1 cm / 23,3"x46,9"
45x90 cm / 17,7"x35,5"
32x62,5 cm / 12,6"x24,6"



Rect. Marmetta Grey 59,1x119,1 / 23,3"x46,9" · Deco Marmetta Grey 32x62,5 / 12,6"x24,6"



Rect. Marmetta Cream 59,1x119,1 / 23,3"x46,9" · Deco Marmetta Cream 32x62,5 / 12,6"x24,6"



Marmetta Grey 32x62,5 / 12,6"x24,6"
Deco Marmetta Grey 32x62,5 / 12,6"x24,6"
Listelo Marmetta Grey 3,2x32 / 1,3"x12,6"



Rect. Marmetta Cream 59,1x119,1 / 23,3"x46,9"
Deco Marmetta Cream 32x62,5 / 12,6"x24,6"

PIEDRA | PORCELÁNICO ESMALTADO
STONE | GLAZED PORCELAIN TILES
PIERRE | GRÉS CERAME EMAILLÉ
STEIN | GLASIERTES FEINSTEINZEUG
КАМЕНЬ | КЕРАМОГРАНИТ ГЛАЗУРОВАННЫЙ

60x120 cm / 23,6"x47,3"
Rect 59,1x119,1 cm / 23,3"x46,9"
45x90 cm / 17,7"x35,5"
32x62,5 cm / 12,6"x24,6"



Rect. Marmetta Grey 59,1x119,1 / 23,3"x46,9" Deco Marmetta Grey 32x62,5 / 12,6"x24,6"



Rect. Marmetta Cream 59,1x119,1 / 23,3"x46,9"
Deco Marmetta Cream 32x62,5 / 12,6"x24,6"



Rect. Marmetta Grey 59,1x119,1 / 23,3"x46,9"



Rect. Marmetta Cream 59,1x119,1 / 23,3"x46,9"
Marmetta Cream 60x120 / 23,6"x47,3"

GF-20552B
GF-20551B



Rect. Marmetta Grey 59,1x119,1 / 23,3"x46,9"
Marmetta Grey 60x120 / 23,6"x47,3"

GF-20552B
GF-20551B



Marmetta Cream 45x90 / 17,7"x35,5"

GF-20512B



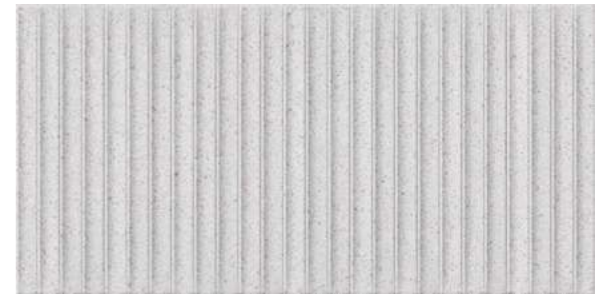
Marmetta Grey 45x90 / 17,7"x35,5"

GF-20512B



Deco Marmetta Cream 45x90 / 17,7"x35,5"

GF-20512D

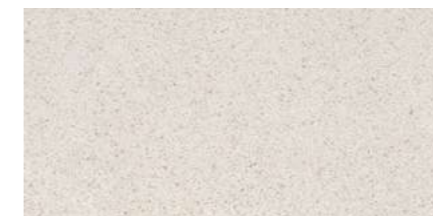


Deco Marmetta Grey 45x90 / 17,7"x35,5"

GF-20512D

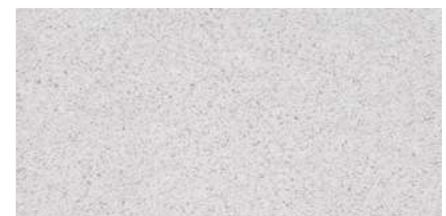


Mosaico GF-20045
Marmetta Cream
30x30 / 11,8"x11,8"



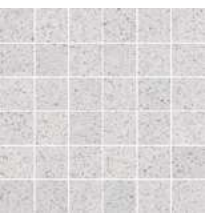
Marmetta Cream
32x62,5 / 12,6"x24,6"

GF-20355B



Marmetta Grey
32x62,5 / 12,6"x24,6"

GF-20355B



Mosaico GF-20045
Marmetta Grey
30x30 / 11,8"x11,8"



Listelo GF-10031
Marmetta Cream
3,2x32 / 1,3"x12,6"



Deco Marmetta Cream
32x62,5 / 12,6"x24,6"

GF-20355D



Deco Marmetta Grey
32x62,5 / 12,6"x24,6"

GF-20355D



Listelo GF-10031
Marmetta Grey
3,2x32 / 1,3"x12,6"

PIEDRA | PORCELÁNICO ESMALTADO
STONE | GLAZED PORCELAIN TILES
PIERRE | GRES CERAME EMAILLÉ
STEIN | GLASIERTES FEINSTEINZEUG
КАМЕНЬ | КЕРАМОГРАНИТ ГЛАЗУРОВАННЫЙ

60x120 cm / 23,6"x47,3"
Rect 59,1x119,1 cm / 23,3"x46,9"
45x90 cm / 17,7"x35,5"
32x62,5 cm / 12,6"x24,6"



Rect. Marmetta Dark 59,1x119,1 / 23,3"x46,9" Deco Marmetta Dark 32x62,5 / 12,6"x24,6"



Rect. Marmetta Dark 59,1x119,1 / 23,3"x46,9" GF-20552B
Marmetta Dark 60x120 / 23,6"x47,3" GF-20551B



Marmetta Dark 32x62,5 / 12,6"x24,6" GF-20355B



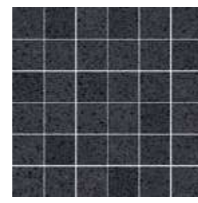
Listelo GF-10031 Marmetta Dark 3,2x32 / 1,3"x12,6"



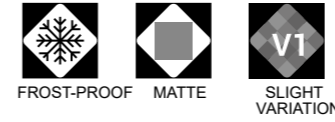
Marmetta Dark 45x90 / 17,7"x35,5" GF-20512B



Deco Marmetta Dark 45x90 / 17,7"x35,5" GF-20512D



Mosaico GF-20045 Marmetta Dark 30x30 / 11,8"x11,8"



FROST-PROOF MATTE SLIGHT VARIATION

CARACTERÍSTICAS TÉCNICAS
TECHNICAL DATA
CARACTÉRISTIQUES TECHNIQUES
TECHNISCHE CHARAKTERISTIKEN
ТЕХНИЧЕСКАЯ ХАРАКТЕРИСТИКА

COLOR	FLEXIÓN ISO-105454	DUREZA MOHSEN-101	ABRASIÓN/PEI ISO-10545-7	CUARTEO ISO-10545-11	RESISTENCIA AL ATAQUE QUÍMICO (ISO-10545-13)				R. HELADA ISO-10545-12	DESPLAZAMIENTO DIN 51130-R	DESPLAZAMIENTO UNE-ENV 12633	DCOF ANSI A137.1	CLASIFICACIÓN GAYAFORES
					MANCHAS	AGENTES LIMPIEZA	ADITIVOS PISCINAS	ÁCIDOS/BASES					
MARMETTA CREAM	≥ 35	7	IV	CUMPLE	5	A	A	LA/HA	CUMPLE	R-9	C1	0,42 ≤ DCOF < 0,60	D*
DECO MARMETTA CREAM	≥ 35	7	-	CUMPLE	5	A	A	LA/HA	CUMPLE	-	-	-	W
MARMETTA GREY	≥ 35	7	IV	CUMPLE	5	A	A	LA/HA	CUMPLE	R-9	C1	0,42 ≤ DCOF < 0,60	D*
DECO MARMETTA GREY	≥ 35	7	-	CUMPLE	5	A	A	LA/HA	CUMPLE	-	-	-	W
MARMETTA DARK	≥ 35	7	II	CUMPLE	5	A	A	LA/HA	CUMPLE	R-9	C1	0,42 ≤ DCOF < 0,60	B
DECO MARMETTA DARK	≥ 35	7	-	CUMPLE	5	A	A	LA/HA	CUMPLE	-	-	-	W

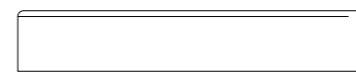
DESARROLLO GRÁFICO
GRAPHIC DEVELOPMENT
DÉVELOPPEMENT GRAPHIQUE
GRAFISCHE ENTWICKLUNG
ГРАФИЧЕСКОЕ РАЗВИТИЕ

60x120 / 12 patterns	45x90 / 15 patterns	DECO 45x90/ 10 patterns	32x62,5 / 20 patterns	DECO 32x62,5/ 20 patterns
----------------------	---------------------	-------------------------	-----------------------	---------------------------

PACKING LIST

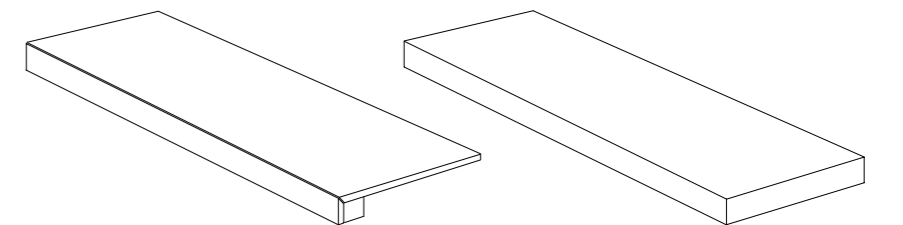
FORMATO	ESPESOR	ARTÍCULO	PZS / CJ	M2 / CJ	CJ / PAL	M2 / PAL	KG / CJ	KG / M2	KG / PAL
60x120	11,4	MARMETTA	2	1,44	30	43,20	36,72	25,50	1102
59,1x119,1	11,4	RECT. MARMETTA	2	1,41	27	38,07	36,00	25,50	971
45x90	11	MARMETTA / DECO MARMETTA	3	1,22	30	36,60	30,10	24,70	902
32x62,5	9	MARMETTA / DECO MARMETTA	5	1,00	48	48,00	19,90	19,90	955
30x30	9	MOSAICO MARMETTA	6	0,54	36	216 PZS.	9,84	1,64 / PZA	354
8x45	9	ROD. N MARMETTA	26	-	60	1560 PZS.	15,6	0,6 / PZA	936

RODAPIÉ / disponible en todos los colores
BASEBOARD / available in all colours
PLINTHE / disponible dans toutes les couleurs
SOCKELFLIESE / in allen Farben lieferbar
ПЛИНТУС / доступны во всех цветах



GF-20086 Rodapié N 8x45

PIEZAS ESPECIALES / BAJO PEDIDO, disponible en todos los colores
SPECIAL PIECES / UNDER ORDER, available in all colours
PIÈCES SPÉCIALES / SUR DEMANDE, disponible dans toutes les couleurs
SPEZIALTEILE / AUF ANFRAGE, in allen Farben lieferbar
СПЕЦИАЛЬНЫЕ ЧАСТИ / ПО ЗАПРОСУ, доступны во всех цветах



Peldaño Técnico

Peldaño Técnico Escuadra

MARMETTA
urbanessence

GF

PIEDRA | PORCELÁNICO ESMALTADO
STONE | GLAZED PORCELAIN TILES
PIERRE | GRES CERAME EMAILLÉ
STEIN | GLASIERTES FEINSTEINZEUG
КАМЕНЬ | КЕРАМОГРАНИТ ГЛАЗУРОВАННЫЙ

60x120 cm / 23,6"x47,3"
Rect 59,1x119,1 cm / 23,3"x46,9"
45x90 cm / 17,7"x35,5"
32x62,5 cm / 12,6"x24,6"



Rect. Marmetta Grey 59,1x119,1 / 23,3"x46,9" · Deco Marmetta Grey 32x62,5 / 12,6"x24,6"