

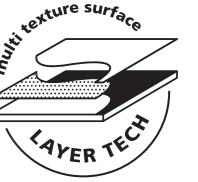


FS Star LT

SINGLE FIRED FLOOR TILES



FS Star LT Blue



# FS Star LT

SINGLE FIRED FLOOR TILES

FS STAR LT Sage



FS STAR LT Black



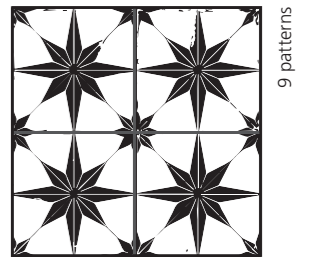
FS STAR LT Blue



FS STAR LT White



## FS STAR LT



45 \* 45 \* 1,05 cm  
18 \* 18"

NO RECTIFIED	LAYER TECH
	BN17
BLACK	32447
BLUE	32448
SAGE	32449
WHITE	33214



Rodapie - Skirting (R. FS 0)  
8 \* 45 cm | 3 \* 18" P8

### CARACTERÍSTICAS TÉCNICAS | TECHNICAL CHARACTERISTICS

joint	versatile	matt/gloss	diferent shades	shade variation	various graphics

### CARACTERÍSTICAS TÉCNICAS ANTIDESLIZAMIENTO | ANTI-SLIP CHARACTERISTICS

Ensayo   Essay	Características   Features	Resultado   Result
		LAYER TECH
DIN 51130	Ángulo crítico (Pies calzados)   Critical angle (footwear)	R10
BS 7976-2	Antideslizamiento (Test del péndulo)   Slip resistance (Pendulum test-PTV)	+36 Wet
UNE 41901 EX	Antideslizamiento (Test del péndulo)   Slip resistance (Pendulum test)	Class 2
ANSI A.1371	Coefficiente de Fricción Dinámico   Dynamic Coefficient of Friction (DCOF)	>0,42



FS Star LT Black

# FS Star LT

SINGLE FIRED FLOOR TILES

# FS Roots

SINGLE FIRED FLOOR TILES

FS ROOTS 0



R. FS ROOTS 0



FS ROOTS 1



FS ROOTS 2



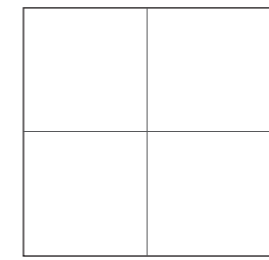
FS ROOTS 3



FS ROOTS 4



## FS ROOTS



45 \* 45 \* 1,05 cm | 18 \* 18"

NO RECTIFIED	NATURAL
FS ROOTS 0	BN14
FS ROOTS 1	28888
FS ROOTS 2	28889
FS ROOTS 3	28890
FS ROOTS 4	28891



12 \* 24 \* 0,9 cm | 5 \* 9"

NO RECTIFIED	NATURAL
D. FS FRINGE BLACK	P6
D. FS FRINGE BLUE	26334
D. FS FRINGE SAGE	26336
D. FS FRINGE WHITE	26333

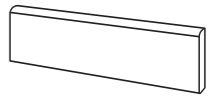


5 \* 24 cm | 2 \* 9"

NO RECTIFIED	NATURAL
M. FS FRINGE BLACK	P14
M. FS FRINGE BLUE	27937
M. FS FRINGE SAGE	27938
M. FS FRINGE WHITE	27939



27779 L. FS BRASS/22,3 \_  
22,3 \* 1 \* 1 cm | 9 \* 0,4" \_ **P43**



Rodapie - Skirting (**R. FS ROOTS 0**)  
8 \* 45 cm | 3 \* 18" **P8**

### CARACTERÍSTICAS TÉCNICAS | TECHNICAL CHARACTERISTICS

joint	versatile	matt	different shades	shade variation	various graphics

### CARACTERÍSTICAS TÉCNICAS ANTIDESLIZAMIENTO | ANTI-SLIP CHARACTERISTICS

Ensayo   Essay	Características   Features	Resultado   Result
DIN 51130	Ángulo crítico (Pies calzados)   Critical angle (footwear)	R9
BS 7976-2	Antideslizamiento (Test del péndulo)   Slip resistance (Pendulum test-PTV)	+ 36 Wet
UNE 41901 EX	Antideslizamiento (Test del péndulo)   Slip resistance (Pendulum test)	Class 1
ANSI A137.1	Coefficiente de Fricción Dinámico   Dynamic Coefficient of Friction (DCOF)	> 0,42
ISO 10545-7	Resistencia a la Abrasión Superficial/Resistance to Surface Abrasion	PEI 4

### EMBALAJE | PACKING

(Los pesos aquí reflejados pueden sufrir ligeras variaciones en función del lote de producción. Weights shown here may slightly vary depending on the production lot.)

Formato   Sizes	Cajas   Boxes			Pallet			Cont./20' 21500 kg.		Cont./20' 24000 kg.	
	Piezas	m <sup>2</sup> / sq.m	kg	Cajas	m <sup>2</sup> / sq.m	kg	Tamaño cm aprox.	m <sup>2</sup> / sq.m	m <sup>2</sup> / sq.m	
cm										
45 * 45 * 1,05	5	1	23,139	66	66	1551	120 * 80 * 105	914,89	1021,28	
inch	units	ft <sup>2</sup>	lb	Boxes	ft <sup>2</sup>	lb	Sizes Inch approx.	ft <sup>2</sup>	ft <sup>2</sup>	
17 11/16 * 17 11/16 * 7/16	5	10,76	51,02	66	710,42	3419,96	47 1/4 * 31 1/2 * 41 5/16	9847,91	10993,02	



# FS Original

SINGLE FIRED FLOOR TILES

FS Nijar  
FS 0

# FS Original

SINGLE FIRED FLOOR TILES

10 patterns



FS-1

5 patterns



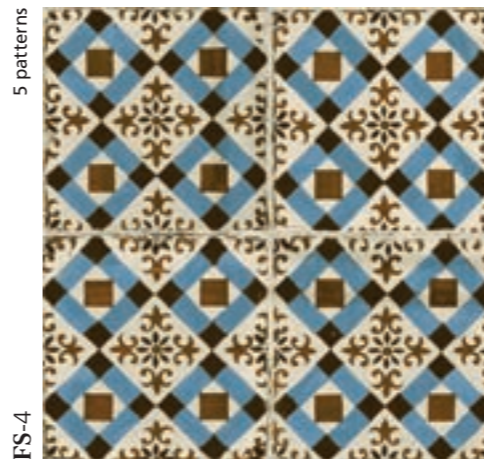
FS-2

8 patterns



FS-3

5 patterns



FS-4

6 patterns



FS NIJAR

13 patterns

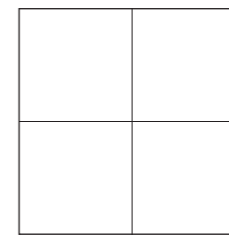


FS-0

R.FS-0

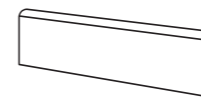


## FS ORIGINAL



45 \* 45 \* 1,05 cm | 18 \* 18"

NO RECTIFIED	NATURAL BN14
FS-0	13305
FS-1	12500
FS-2	12501
FS-3	12519
FS-4	12541
FS NIJAR	20402



Rodapie - Skirting (R. FS 0)  
8 \* 45 cm | 3 \* 18" P8

### CARACTERÍSTICAS TÉCNICAS ANTIDESLIZAMIENTO ANTI-SLIP CHARACTERISTICS

Ensayo   Essay	Resultado   Result	
	FS0, 1, 2, 3, 4	FS NIJAR
DIN 51130	R9	R10
DIN 51097	-	A+B
BS-77976-2	+36 Wet	+36 Wet
UNE 41901 EX	Class 1	Class 2
AINSI A137.1	-	>0,42
ISO 10545-7	PEI 4	-

### EMBALAJE | PACKING

Formato   Sizes	Cajas   Boxes			Pallet			Cont./20'	Cont./20'	
	Piezas	m2/sq.m	kg	Cajas	m2/sq.m	kg	21500 kg.	24000 kg.	
cm									
45 * 45 * 1,05	5	1	23,1	66	66	1551	120 * 80 * 105	914,89	1021,28
inch									
17 11/16 * 17 11/16 * 7/16	5	10,76	51	66	710,42	3419,96	47 1/4 * 31 1/2 * 41 5/16	9847,91	10993,02

(Los pesos aquí reflejados pueden sufrir ligeras variaciones en función del lote de producción. Weights shown here may slightly vary depending on the production lot.)

### CARACTERÍSTICAS TÉCNICAS TECHNICAL CHARACTERISTICS

joint	versatile	matt	diferent shades
shade variation	various graphics	various moulds	



408

FS VINTAGE TILES

FS Porto

SINGLE FIRED FLOOR TILES



FS Tradition  
White Brick LT



FS Porto Fatima



# FS Porto

SINGLE FIRED FLOOR TILES

FS PORTO Amaral



FS PORTO Fatima



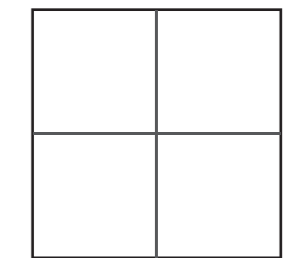
FS PORTO Flavia



FS PORTO Iria



## FS PORTO



45 \* 45 \* 1,05 cm | 18 \* 18"

NO RECTIFIED	NATURAL
	BN14
AMARAL	31653
FATIMA	31654
FLAVIA	31655
IRIA	31656

### CARACTERÍSTICAS TÉCNICAS | TECHNICAL CHARACTERISTICS

joint	versatile	matt	diferent shades	shade variation	various graphics

### EMBALAJE | PACKING

(Los pesos aquí reflejados pueden sufrir ligeras variaciones en función del lote de producción. Weights shown here may slightly vary depending on the production lot.)

Formato   Sizes	Cajas   Boxes			Pallet				Cont./20'	Cont./20'
	Piezas	m2/ sq.m	kg	Cajas	m2/ sq.m	kg	Tamaño cm aprox.	m2/ sq.m	m2/ sq.m
cm									
45 * 45 * 1,05	5	1	23,139	66	66	1551	120 * 80 * 105	914,89	1021,28
inch	units	ft2	lb	Boxes	ft2	lb	Sizes Inch approx.	ft2	ft2
17 11/16 * 17 11/16 * 7/16	5	10,76	51,02	66	710,42	3419,96	47 1/4 * 31 1/2 * 41 5/16	9847,91	10993,02

FS Porto

SINGLE FIRED FLOOR TILES

FS Porto Iria  
FS Porto Amaral